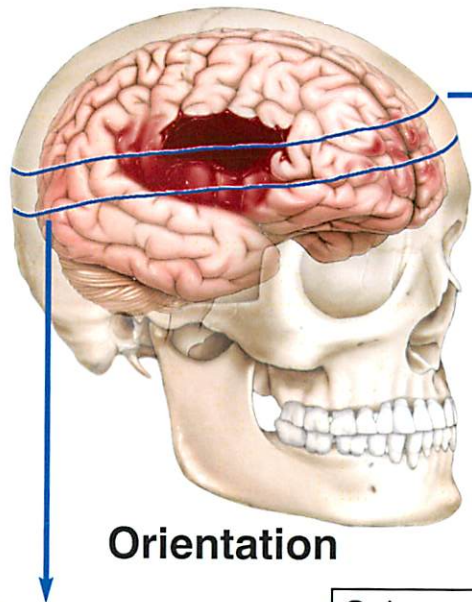


Head CT Findings

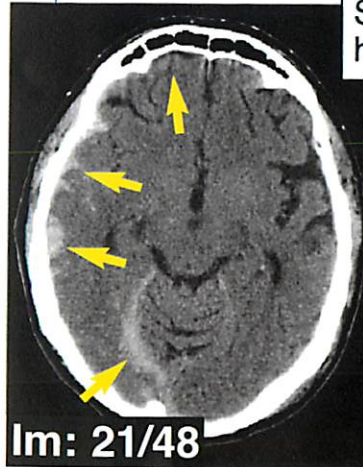


Orientation



7 mm right frontal subdural hematoma

Axial CT

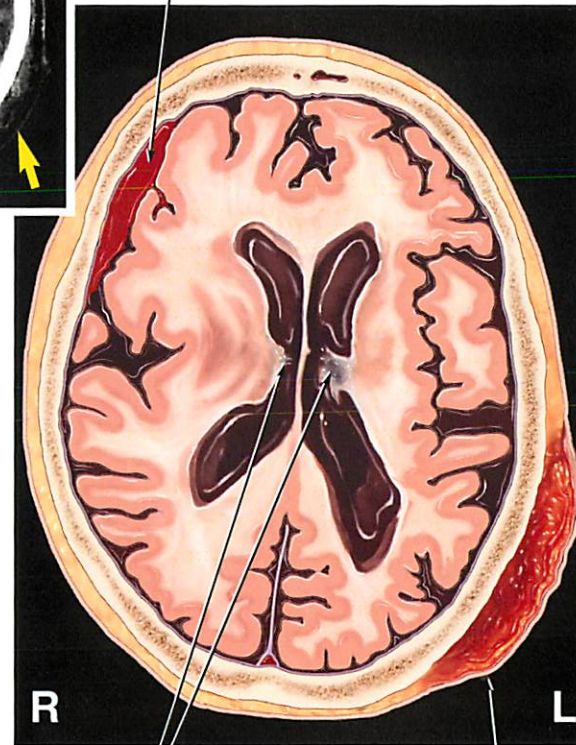


Subarachnoid hemorrhage

Frontal hemorrhagic contusions

Im: 21/48

Axial CT



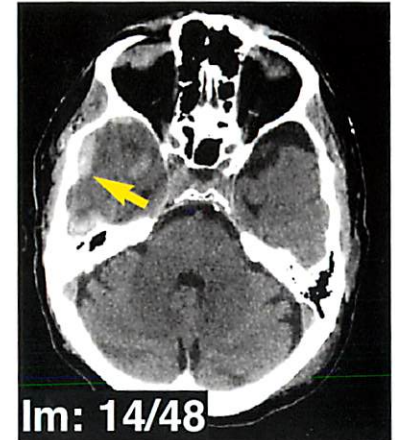
R

L

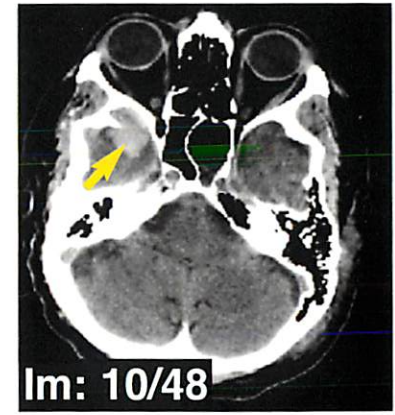
Chronic ischemic change in the periventricular white matter

Left parietal subgaleal hematoma

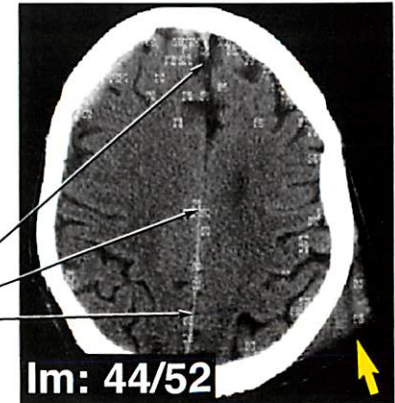
Axial CT Studies



Im: 14/48



Im: 10/48



Im: 44/52

Midline shift

Hemorrhagic contusion

R

L